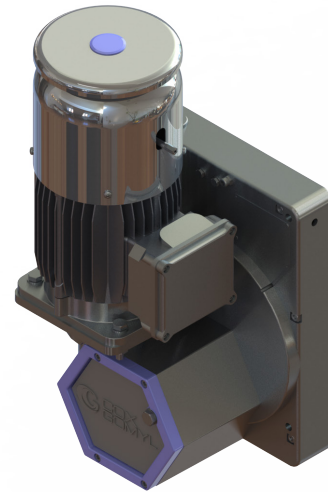
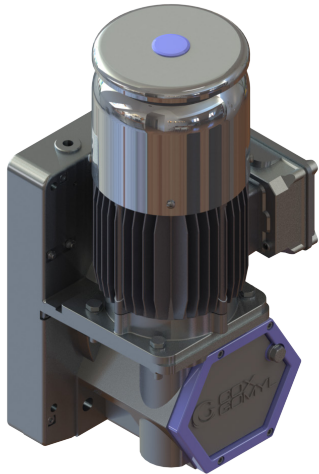


Traction Hoist



Model	EN M508
Electric Power Supply	400 V 50/
Capacity	500 kg
Speed	9 m/min
Power	0.9 kw
Rated Current	2.1 A

Key Features

- Easy to maintain
- Long life cycle
- Designed for heavy duty use

Optional Features

- Low temperature kit: -25°C; + 40°C
- Traction hoist protective cover

The CoxGomyl™ traction hoist is specifically designed to integrate with our suspended self-powered platforms or in combination with other lifting equipment.

The traction hoist has been designed with a range of safety features to meet regulations stand the test of time, even in adverse climate conditions due to its robust and reliable design.

Standard Features

- Designed and certified according EN 1808 harmonized standard and 2006/42/EC machinery directive
- Electromagnetic motor brake
- Centrifugal brake to control manual descent speed
- Overload detection device
- No-power manual descent lever in case of emergency
- Climbing speed: 9 m/min
- Weight: 50 kg
- Operating temperature: -15°C; + 60°C
- Max. noise level: 80 dB
- Wire rope Ø8.4 mm
- IP 55

COXGOMYL and related logos are registered trademarks of Alimak Group AB (publ) and its subsidiaries ("Alimak Group"), in several jurisdictions, including but not limited to the EU and the United States. Alimak Group retains all rights in its name and for above mentioned trademarks, whether registered or not.